

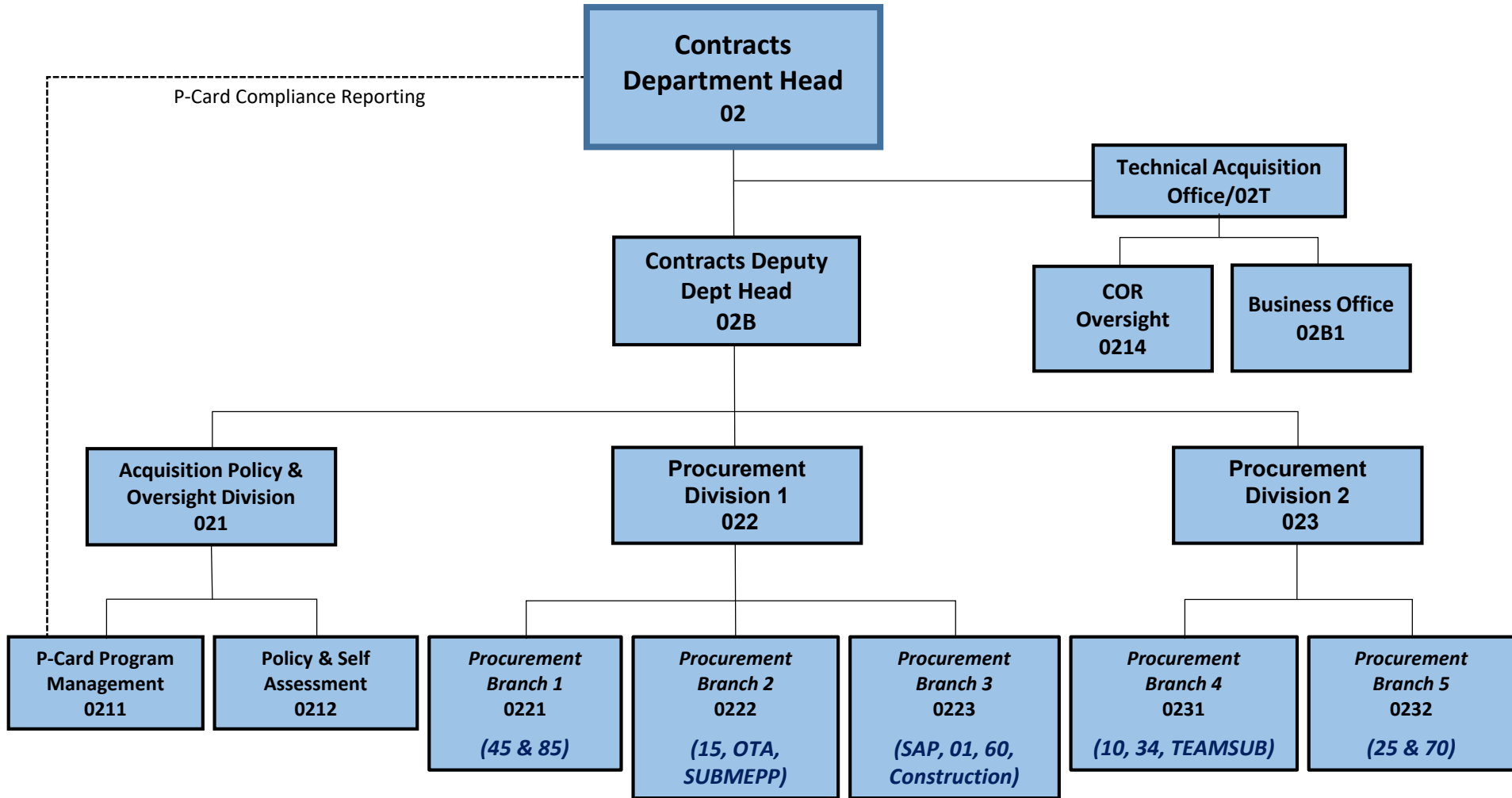
Naval Undersea Warfare Center

Division Newport

Code 02 FY22 Recap

Department Head, Code 02 Contracts





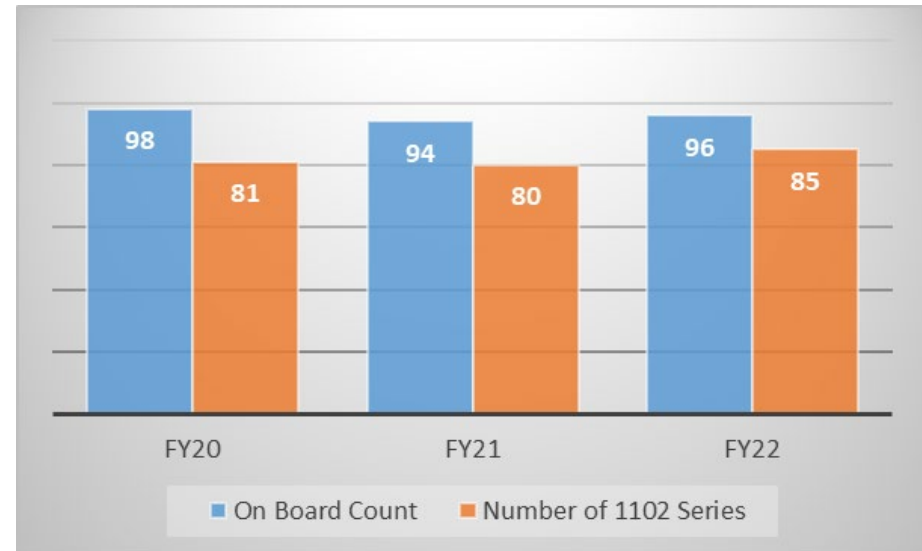
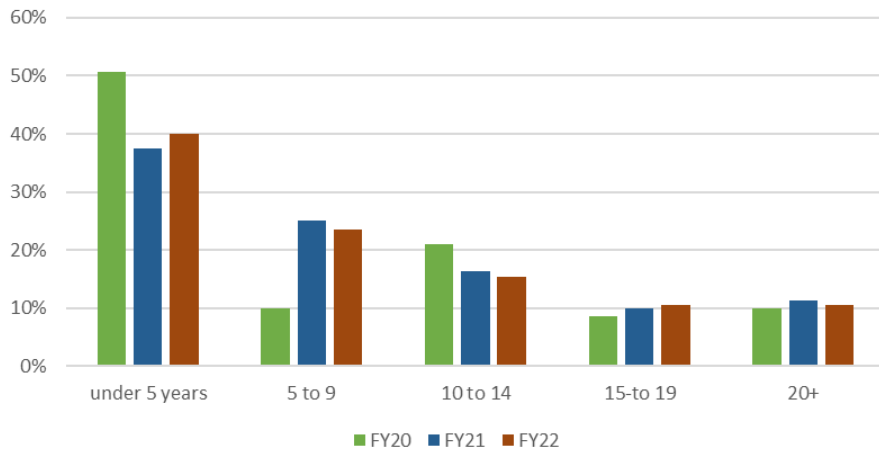
89% of workforce were 1102s in FY22
Including NADP “interns”

Average Years of Service - Total Workforce
Including Interns

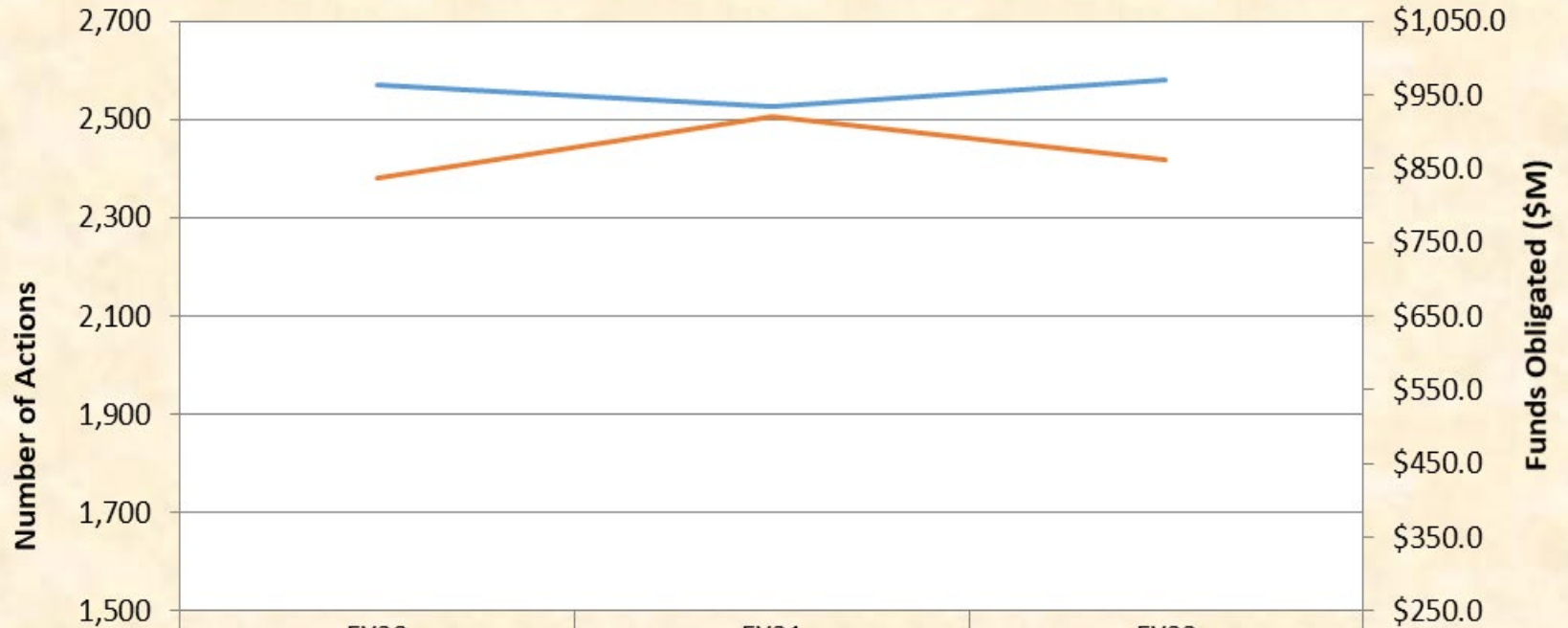


- **Lost 72 years of non-retirement experience and 73 years of retirement experience in FY22**
- **Added 16 new 1102s**
- **Leadership Team has on average 11 years experience in Code 02**

1102 Years Experience (Including Interns)



FY22 Obligations including OTAs and TEAM SUB: \$862.9M



— Number of Actions	2,570	2,525	2,581
— Obligated \$M	\$836.6	\$920.7	\$862.9

NUWC - \$595.3M Team SUB Direct - \$154.5M OTA - \$113.1M

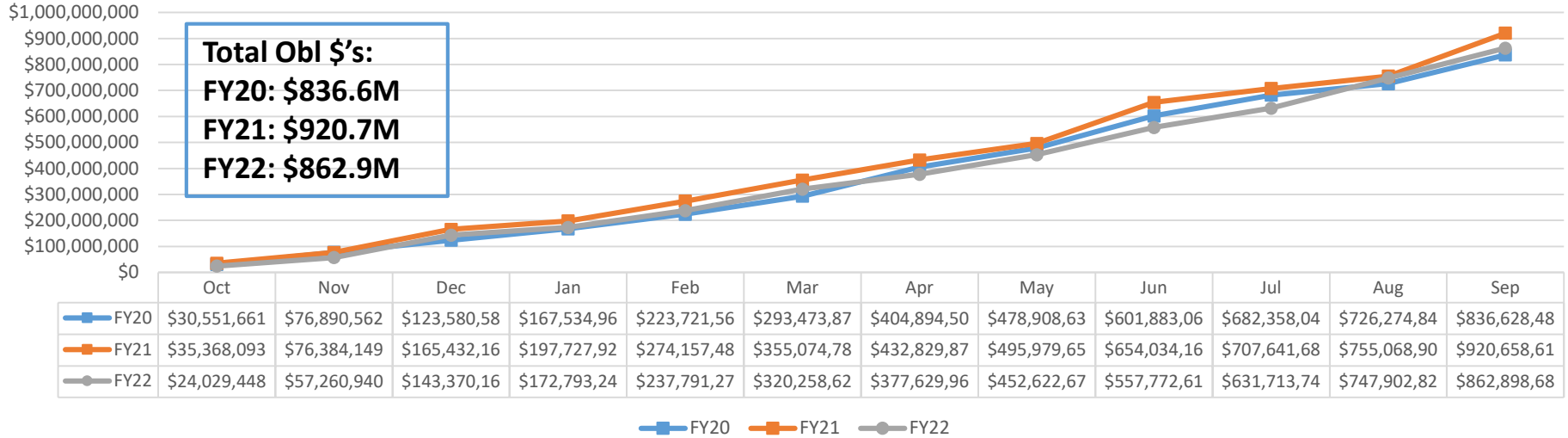
Obligations & Number of Actions (Cumulative): FY20-FY22



-- Data includes OTAs and TEAM SUB --

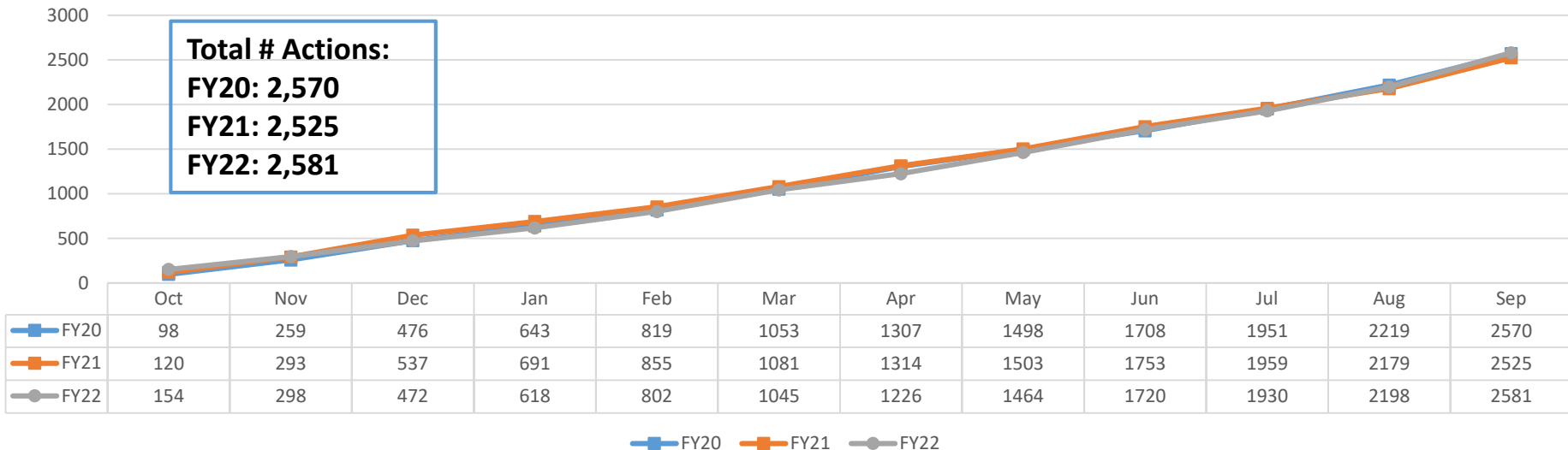
Obligation \$'s

Source: SAM.gov

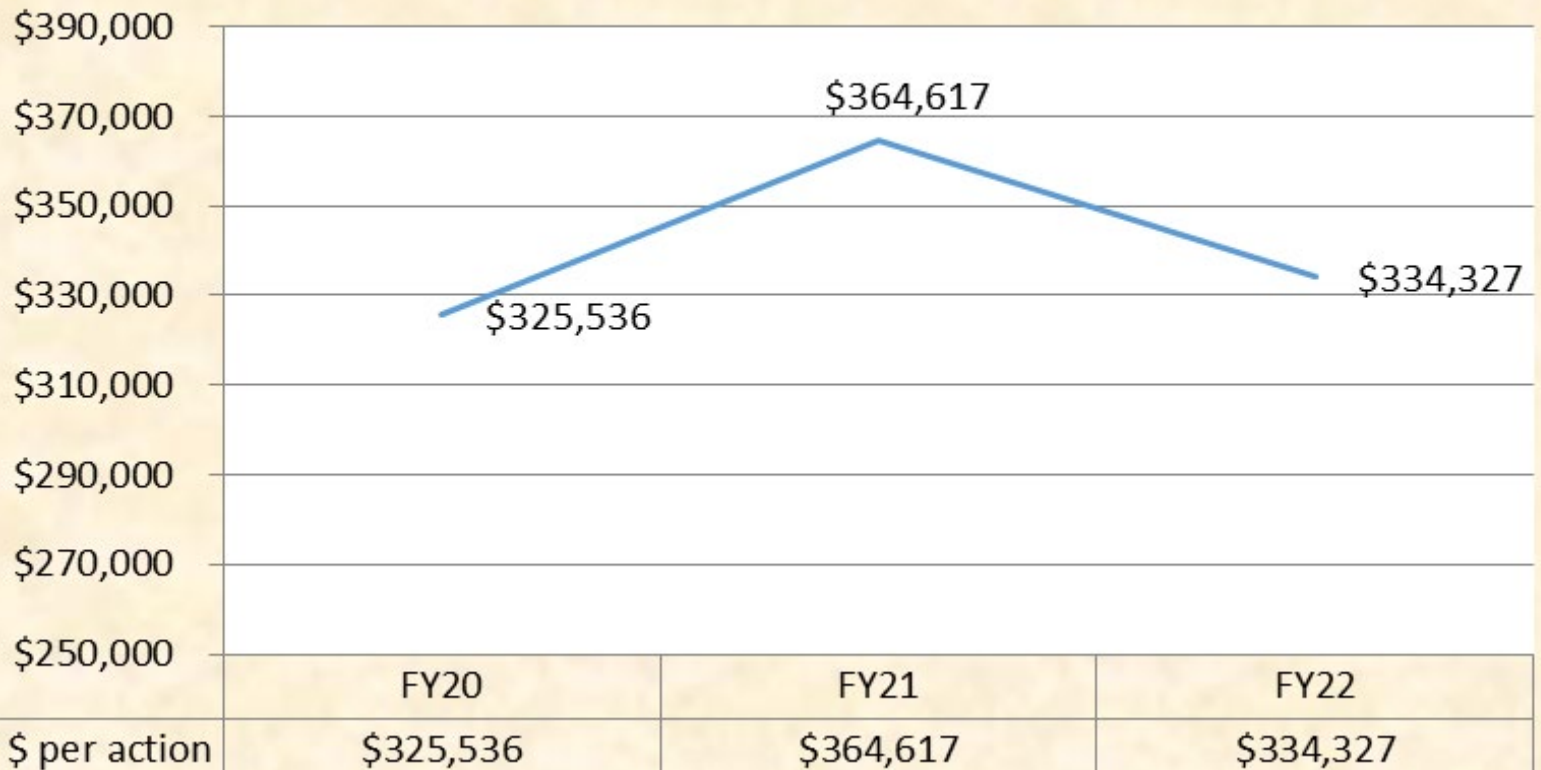


of Actions

Source: SAM.gov



Average \$ Obligated Per Action



— Continuously striving to obligate more dollars with fewer actions —

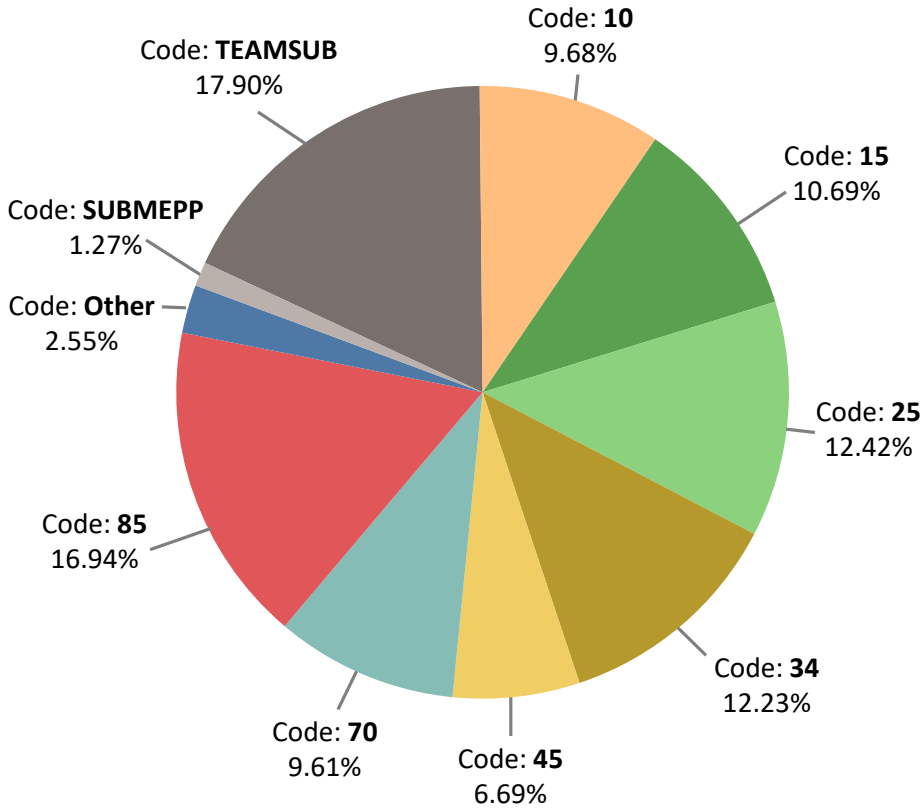


Obligations by Action Type FY20, FY21, FY22

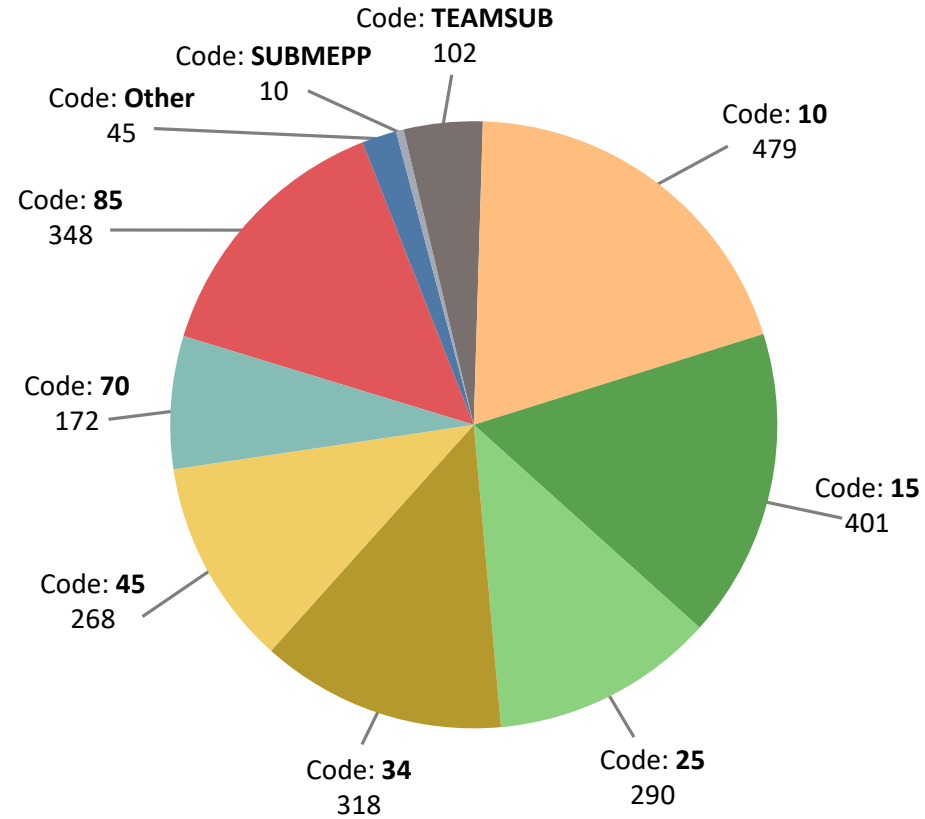


	FY20		FY21		FY22	
Type of Action	# of Actions	\$ (M)	#of Actions	\$ (M)	#of Actions	\$ (M)
Major Contract	41	\$2.56	30	\$30.49	11	\$7.76
Seaport TO	16	\$14.99	16	\$16.86	21	\$16.28
Multiple Award						
TO/DO	116	\$82.32	66	\$75.48	20	\$10.51
Single Award TO/DO	165	\$57.70	113	\$66.84	174	\$115.52
Modifications	1,845	\$568.99	1,776	\$579.90	1,730	\$559.69
New SAPs	307	\$26.24	416	\$45.15	413	\$39.83
OTA Actions	80	\$83.80	108	\$107.98	79	\$113.03
TOTAL	2,570	\$836.60	2,525	\$920.70	2,581	\$862.89

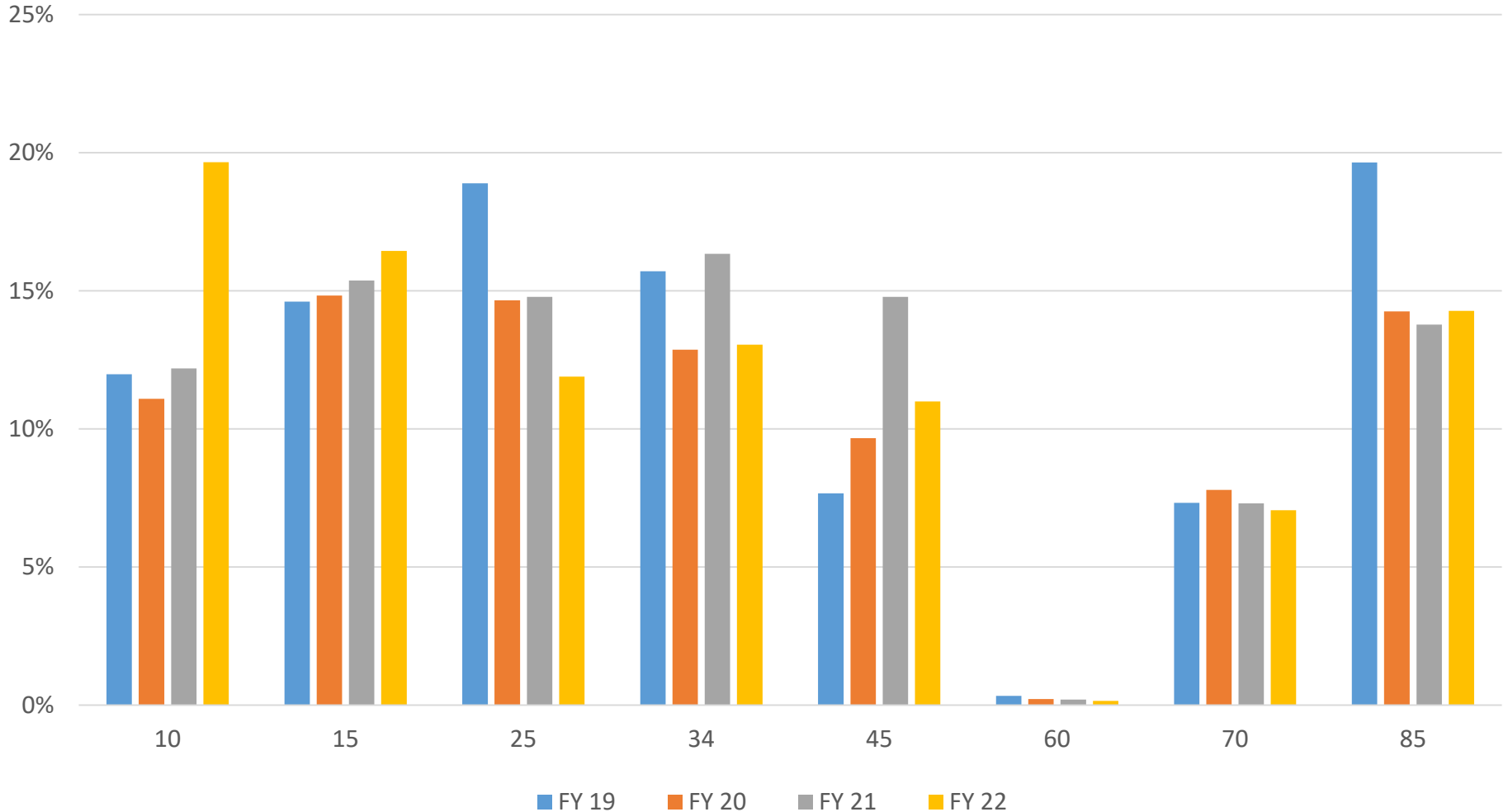
FY22 Obligations by Department



FY22 Actions by Department



Workload Trends by Dept (% work load based on # of Actions)





Contractor Assessment Performance Reporting System (CPARS)



- **229 Total CPARS Completed in FY22**
- **100% complete, 93% within 120 day cycle**



Vendor Base Top 20

-- \$M and Number of Actions --



Dollars	Actions
SYSTEMS ENGINEERING ASSOCIATES CORPORATION	MCLAUGHLIN RESEARCH CORP
AMENTUM SERVICES INC	SYSTEMS ENGINEERING ASSOCIATES CORPORATION
RITE-SOLUTIONS, INC.	MIKEL, INC.
MCLAUGHLIN RESEARCH CORP	SCIENCE APPLICATIONS INTERNATIONAL CORPORATION
SERCO INC.	RAYTHEON COMPANY
AMENTUM SERVICES, INC.	SERCO INC.
KMS SOLUTIONS, LLC	RITE-SOLUTIONS, INC.
LEIDOS, INC.	KMS SOLUTIONS, LLC
MIKEL, INC.	PURVIS SYSTEMS INCORPORATED
SERCO-IPS CORPORATION	L3 TECHNOLOGIES, INC.
BOOZ ALLEN HAMILTON INC	NORTHROP GRUMMAN SYSTEMS CORPORATION
SYNCHRON, LLC	AMERICAN SYSTEMS CORPORATION
SCIENCE APPLICATIONS INTERNATIONAL CORPORATION	GENERAL DYNAMICS INFORMATION TECHNOLOGY, INC.
PURVIS SYSTEMS INCORPORATED	LEIDOS, INC.
NORTHROP GRUMMAN SYSTEMS CORPORATION	PROGENY SYSTEMS CORPORATION
LOCKHEED MARTIN SIPPICAN, INC.	SERCO-IPS CORPORATION
L3 TECHNOLOGIES, INC.	AMENTUM SERVICES INC
CANADIAN COMMERCIAL CORPORATION	GVI, INC.
PATRONA CORPORATION	SYQWEST, INC.
LOCKHEED MARTIN CORPORATION	TELECONSULTANTS INC

\$100K or More – 173 companies, \$500K or more 85 Companies
\$1M or more – 66 Companies



QUESTIONS?
